

WELCOME

THE WEBINAR WILL BEGIN SOON



The Role of **CLIMATE
RISK ASSESSMENT** in
Environmental Due Diligence

DISCLAIMER FOR ERIS CONTENT:

This disclaimer applies to all webinars, podcasts, videos and other reference materials (hereon referred to as 'online content') hosted by ERIS, and any associated documents, information or opinions presented, or obtained from, online content. Please read this disclaimer before participating in, reading, or making any other use of the material provided by ERIS or on ERISINFO.COM.

- ERIS makes no representations or warranties about the accuracy or suitability of information provided in the webinars and related materials such as reference materials, presentation documents and recordings.
- The information contained in the webinars and related materials are not intended to constitute advice of any kind or the rendering of consulting, or other professional services. Registering for a webinar only constitutes an agreement to attend, not a contract for consultancy or advice.
- The opinions expressed in a webinar are those of the speaker(s) only and may not represent the views of ERIS. To the extent permitted by law, ERIS excludes all liability for any loss, claim or damage, cost, or expense, including any indirect or consequential damages or lost profit, whether arising in negligence or otherwise, suffered in connection with the access to, participation in, or use of the webinar by you or any other person.
- ERIS reserves the right to suppress the posting of any webinar recordings it produces.



The Role of **CLIMATE
RISK ASSESSMENT** in
Environmental Due Diligence



CLIMATE RISK ASSESSMENT

POWERED BY  ClimateCheck®

Instantly know property risks due to climate change



STORM



DROUGHT



HEAT



FIRE



FLOOD

erisinfo.com/climaterisk



The Role of **CLIMATE RISK ASSESSMENT** in Environmental Due Diligence

Thursday, February 23, 2023

Presented in partnership with:



Agenda

- Physical climate risk and data
- Factors driving increased attention to climate risk assessments
- Data outputs/hazards included in a climate risk evaluation and the typical scope of work for climate risk due diligence and existing portfolio analysis
- The users of physical climate risk data, how they use it, and how environmental professionals can assist in the assessment process
- An overview of ASTM's new standard for climate risk and property resilience and its application for environmental due diligence
- Q & A

Panel



Caleb Inman
Climate Check



Holly Neber
AEI Consultants



Dave Colonna
ERIS



Climate Risk & Due Diligence

info@climatecheck.com

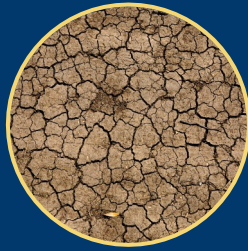
Proprietary and Confidential, Not for Distribution Without Permission

Comprehensive Climate Data

Physical Climate Risk Data



Heavy Precipitation



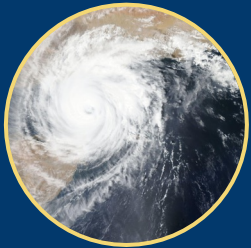
Drought



Extreme Heat



Wildfire



High Winds



**Flood:
Sea Level Rise**



**Flood:
Storm Surge**



**Flood:
Pluvial and Fluvial**

Flood

Hazards and Spatial Resolution

- Pluvial / Surface Flooding (10m)
- Fluvial / River Flooding (10m)
- Sea Level Rise and Tidal Flooding (100m)
- Storm Surge (30m)

Timeline

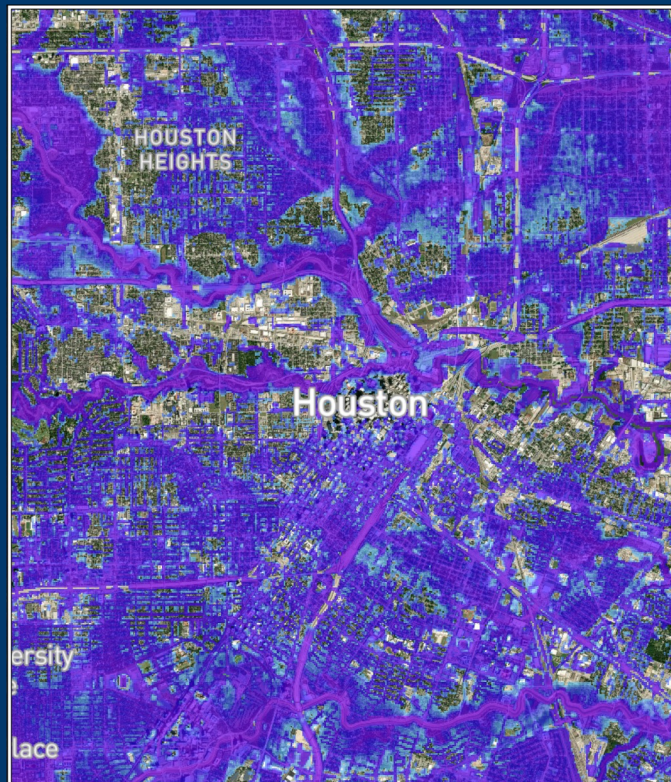
- Current & 30-year

Key Metrics

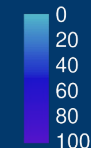
- Probability
- Depth

Emissions Scenarios

- RCP 4.5
- RCP 8.5

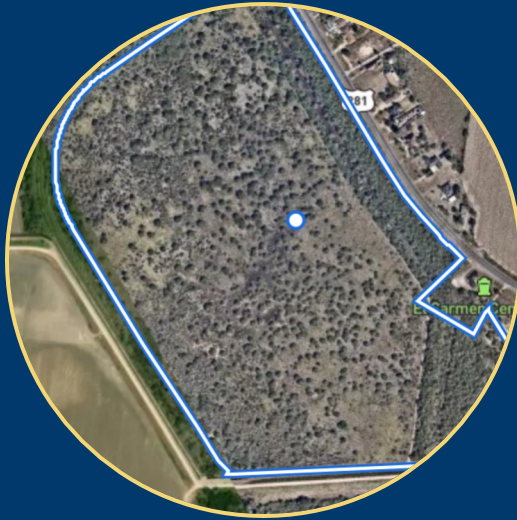


Flood Risk Rating



Query by Specific Location

Search by Parcel or Any Polygon



Individual Property Report

ClimateCheck®

Have a question?
info@climatecheck.com

LOCATION

5801 Sunrise Hwy
Holbrook, NY
11741

RISK RATINGS

1-99 /100

Precipitation
Extreme risk



99

Flood
Extreme risk



83

Heat
High risk



54

Fire
Relatively Low risk



1

Drought
Relatively Low risk



1

ABOUT THESE RATINGS

Our ratings reflect hazard risk at a property relative to the rest of the contiguous United States. Ratings are based on projected 2050 risk and the change from historical risk. A rating of 1 represents the lowest risk; 100 is the highest.



Prepared on February 16, 2023

Page 1 of 27



ERIS



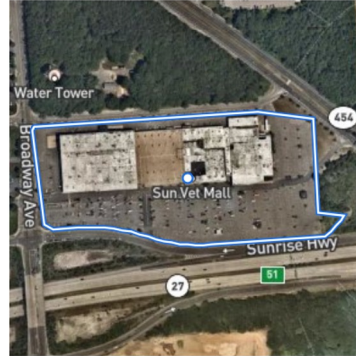
ClimateCheck®

Individual Property Report

5801 Sunrise Hwy
Holbrook, NY
11741

Selected Parcel

Address
5801 Sunrise Hwy, Holbrook, NY, 11741
APN
0500238000100007000
Coordinates
-73.063645°, 40.770253°
Boundaries



*ClimateCheck

Page 2 of 27

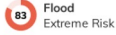


ERIS



ClimateCheck®

Individual Property Report



5801 Sunrise Hwy
Holbrook, NY
11741

Pluvial and Fluvial Flooding Risk Within 500m



ClimateCheck

Page 8 of 27



Individual Property Report

54 Heat
High Risk

5801 Sunrise Hwy
Holbrook, NY
11741

Extreme Heat Risk

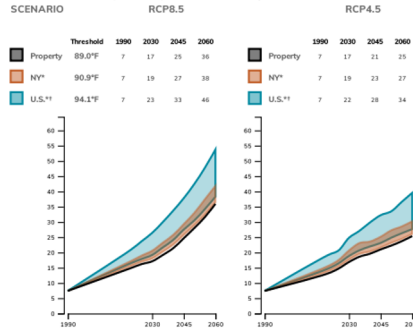
Risk Rating: 54/100. Compared to the contiguous U.S., this property has **high** risk from extreme heat due to climate change.

In this location, historically, an average of about 7 days per year reached above 89°F (32°C).

In 2050,

- about 28 days in an average year will reach above 89°F, and
- about 7 days per year will reach above 94°F (34°C).

Projected Extremely Hot Days Per Year Through 2060



^aClimateCheck[®]

Page 15 of 27



Individual Property Report

54 Heat
High Risk

5801 Sunrise Hwy
Holbrook, NY
11741

Statewide Extreme Heat Risk Ratings

The numbers of people with each Extreme Heat Risk level in New York, and their approximate locations, are shown below. Larger circles represent a greater number of people living in that area with that Extreme Heat Risk.



Extreme Heat Scores by Population in NY

Risk Level	Population	Total	%
84-100		0.0	0%
67-83		65k	0%
51-66		2.9M	13%
34-50		7.2M	33%
17-33		12M	54%
0-16		0.0	0%

ClimateCheck

Page 17 of 27



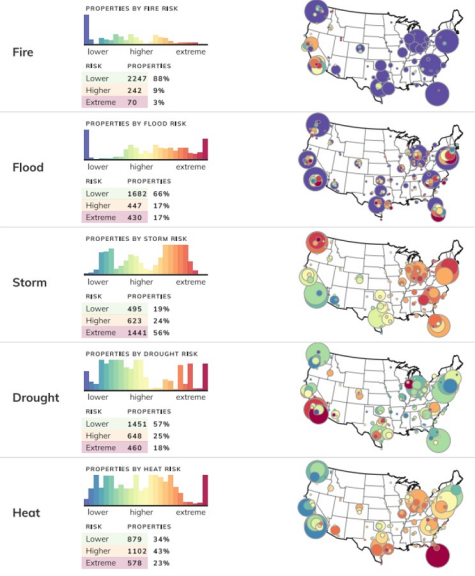
Portfolio Analysis

Sample Portfolio

ClimateCheck™

Climate Change Risk Analysis: Hazards

PROPERTIES 5 10 50 100+



ABOUT YOUR RISK

Your overall risk is an average of future impacts of storms, heat, fires, floods, and drought.

0 100



ERIS



ClimateCheck®

What We Do

Process for Property (& Portfolio) Resilience Assessments (PRA)

1

Climate Hazard Screening

Property or Portfolio level analysis

Used for 1) new asset due diligence /
loan origination and 2) as part of a
portfolio screening

ASTM Stage 1

Climate Vendor / PRA Provider

2

Vulnerability Assessment

Assets identified with high climate
risk are reviewed to assess the
vulnerability and sensitivity of the
property to the hazards identified.

ASTM Stage 1a / 2

Completed by a PRA Provider

3

Resilience Measures

Identify property-specific resilience measures
- can include prioritization and cost
estimates.

ASTM Stage 3

Completed by a PRA Provider

QUESTIONS?



The Role of **CLIMATE
RISK ASSESSMENT** in
Environmental Due Diligence



The screenshot shows the Erisinfo website with the 'infoHUB' dropdown menu open. The menu options are: Eris Blog, News & Updates, Learning Resources, Webinars, Podcasts, and Videos. The website header includes the Eris logo, contact information (1-866-517-5204, info@erisinfo.com), and a 'SIGN IN / ORDER' button. The main navigation bar includes links for ABOUT, PRODUCTS & SERVICE, infoHUB, FAQs, CONTACT, and SCRIVA. The main content area features a 'SmartCD' introduction, a 'WEBINARS' section with the text 'Integrating CLIMATE RISK ASSESSMENT with Environmental Due Diligence' and a date 'FEBRUARY 23 - 11 PM ET', and a 'SCRIVA' section with the text 'Our new report authoring platform' and 'ROCK YOUR REPORT CREATION'.

ERIS 

and videos **ALL IN ONE PLACE.** 1-866-517-5204 info@erisinfo.com SIGN IN / ORDER 

ABOUT PRODUCTS & SERVICE info**HUB** FAQs CONTACT SCRIVA

Introducing **SmartCD** 

ERIS **Blog**

News & Updates

Learning Resources

Webinars

Podcasts

Videos

ERIS  **WEBINARS**

Integrating **CLIMATE**
RISK ASSESSMENT with
Environmental Due Diligence

FEBRUARY 23 - 11 PM ET

SCRIVA  BY ERIS

Our new report authoring platform

**ROCK YOUR
REPORT CREATION**

UPCOMING WEBINARS

March 15



**ERIS' New Report
Authoring Platform:
SCRIVA**

Late March



A Dry-Cleaning Update:
Regulations, Remediation,
and Redevelopment

THANK YOU

FOR JOINING US



The Role of **CLIMATE
RISK ASSESSMENT** in
Environmental Due Diligence